



Clifton Park Primary School

Telephone: 9725 2400 Fax No: 9725 2656

Email: cliftonpark.ps@education.wa.edu.au

Webpage: www.cliftonpark.wa.edu.au

Newsletter No 4

TERM 1

17 March 2016

School Motto: With Pride We Strive

Welcome to our fourth Newsletter.

FACTION ATHLETICS

❖ Faction Field and Distance

What a great day we had yesterday with an excellent Field Day of events. The students showed great sportsmanship throughout the day. Thank you to all the volunteers for helping out.

❖ Athletics Carnival – Friday 18 March 9am

❖ **P&C Catering Tent** – The P&C will again cater at the Faction Athletics Carnival on Friday 18 March with lots of goodies for sale. Please see the P&C section of this newsletter for more details and where you can contribute.

❖ **Help Wanted** – Parent helpers are required to assist with various events. Please contact the school office if you can help.

❖ **No Lunch Orders** - will be available on Friday 18 March from the Bakery. The P&C will have plenty of goodies including the sausage sizzle available for lunch and throughout the day.

YEAR 6 CAMP

Our Year 6's, Mr Kelly and our parent helpers have returned from camp, a little exhausted, but completely satisfied with the camp. The full agenda which included



lots of educational, entertaining and fun activities, kept them busy. I was able to join them on Friday ice skating and it was a pleasure to see their enthusiasm and enjoyment. Whilst I was there a member of the public went out of her way to let me know that she skates there often and that the students were the best group she had ever seen at the ice rink. Great feedback indeed! The students certainly did themselves, their parents and their school proud over the course of the camp. Thank you Mr Kelly for putting it all together and running it so successfully, the parent helpers for your enthusiastic and caring manner, and the students for embracing it wholeheartedly, for overcoming challenges, for working together and for making your camp so successful.

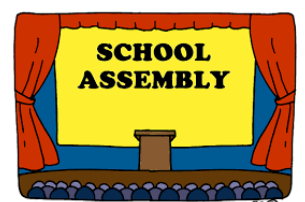
P&C EASTER RAFFLE



Next Thursday, following the assembly we will be drawing out all of the prizes for the annual P&C Easter Raffle. Thank you to all of the families who have brought donations in for this fundraiser. Donations are still welcome and can be placed into the box at the front office. Tickets have been sent home with students last week and more are available at the school office.

YEAR 1 ASSEMBLY

The next assembly is on **Thursday 24 March** at 2pm in the undercover area and will be hosted by our Year 1 class. Like the Year 3 class before them the excitement is building as they practice their lines and learn their parts. Come along and see them next week on the Thursday before the Easter holiday break.



COMING EVENTS

March

- 18 Faction Sports Carnival 9am
- 19 'Have Sum Fun' interschool challenge
- 21 School Council and P&C Meeting
- 24 Year 1 Assembly
Easter Raffle Draw
- 25 Good Friday (school closed)
- 28 Easter Monday (school closed)
- 29 Easter Tuesday (school closed)

April

- 4 Uniform Shop Open 9am-9:30am
- 5 Interschool Athletics Carnival (Yr's 2-6)
- 8 ANZAC Ceremony 9am
- 8 Last day of Term 1

Term 2

- April
- 27 Students Resume Term 2

EASTER MONDAY AND TUESDAY

Please remember that there will be no school on Monday 28 and Tuesday 29 March because of Easter (schools have Easter Tuesday off).

SCHOOL ANZAC SERVICE

This year our school ANZAC ceremony will be on the morning of last day of term (8 April) starting at 9am in the undercover area. Our theme this year will focus on the 100th anniversary of Australia's entry onto the Western Front in Europe, and Poppies because it is 100 years since the famous poem by John McCrae, 'In Flanders Fields' was written. All parents and friends of the school are invited to this ANZAC assembly.

- **Request for Flowers**

Parents or students are asked to bring flowers or greenery that can be used to make up ANZAC wreaths for the ceremony. Please leave them on the sink area outside the Art room on Thursday 7 April.

- **Assistance with making wreaths**

We would be very appreciative for any parents who are able to assist with the making of the wreaths for the ANZAC ceremony. This needs to be done on the Thursday afternoon between 2pm-3pm in the Art room. Please let the office know if you are able to help with the wreath making.

- **ANZAC Day City Parade**



All Clifton Park Primary School students are invited to march in the Bunbury City Parade on Monday 25 April 2016. Students are to assemble with Mrs Jolliffe at the old RSL Hall by 10:15am for the parade to commence at 10:30am. Students will march to the main service which will be held at the Graham Bricknell Musical Shell. The group of students representing our school must be in school uniform, including wearing a hat. (Students are encouraged to wear service decorations of family members on the right hand side of their uniform). The weather can still be hot so students may carry a water bottle with them as they march. Family members are also welcome to join in with the school group to march.



**Ric Gates
PRINCIPAL**

MRS JOLLIFFE'S JOTTINGS

When can I find the time to read hear my child read?

- Children arrive home from school looking for relaxation and entertainment. How this 'down time' is used is different for all children – it may involve playing sport, watching TV, using a computer or tablet, attending interest clubs, seeing friends, or enjoying time alone.
- So, how might you fit in listening to reading into a busy day? The ideal situation would be to sit with your child, but that's not always possible. Here's how you might manage a busy weeknight scenario.
Reading in the car (if you child does not get car sick)



As you're travelling in the car, ask your child to read to you from the back seat. While you can't see the book, you'll know whether what is said 'sounds right'. If what your child is reading doesn't sound right, you could say:

- *Sorry, I missed that bit. Can you read it to me again?*
- *I'm not sure what the author meant there.*
- *I love that bit. Read it to me again.*
- *So what was (the character) doing?*
- *I wish I could see the pictures/photos/ drawings. Tell me about them.*
- *Who was it that said...?*
- *What did they say about....?*
- *What did you just say?*

These approaches can also be use when preparing meals.

**Deborah Jolliffe
DEPUTY PRINCIPAL**

Faction Field & Distance

WEDNESDAY 16 MARCH 2016



C.H.A.T

CHANGING HEALTH ACTING TOGETHER

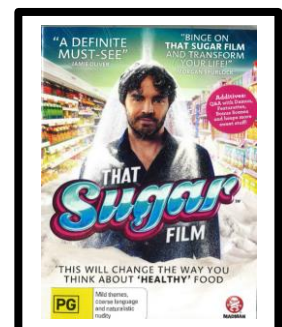
The CHAT Committee at CPPS who bring to the attention of the school community issues and information on a varied range of health topics through the newsletter. They also organise a number of whole school events, modelling and promoting healthy living.

SUGAR – ARE YOU SWEET ENOUGH?

Sugar is hidden and only about 25% of the total sugar we ingest is sugar that we consciously add to foods, for example in tea, coffee or in baking. The remaining 75% comes from everyday packaged foods and drinks we consume such as soft drink, juices, cereals, biscuits and sweets. Because it is easy to consume, too much sugar can lead to many health problems.

The CHAT Committee has purchased the DVD "That Sugar Film" and it is now available for up to a one week loan. Actor Damon Gameau, the film's hero, goes on a 60-day journey where he eats 'supposedly healthy' foods to equal 40 teaspoons of sugar each day from 'hidden' sugars in processed foods. Gameau documents the impact of such foods on his health and state of mind.

Visit the front office to book a viewing of this for your family and we hope you enjoy continuing good health.



YEAR 6 CAMP



KINGS PARK



FLYING FOX



PARLIAMENT HOUSE



FLYING FOX



BOUNCE



FLYING FOX



ABSEILING



ABSEILING



BIKE RIDING



BIKE RIDING



ABSEILING



CANOEING



CANOEING



POINT WALTER TREK



ARCHERY



RAFT BUILDING



ICE SKATING

P & C NEWS

NEXT P&C MEETING

MON 21ST MARCH

Come and get involved in our
proactive group.
We'd love to see you there!

Sports Carnival 2016

P&C Catering - Volunteers Needed

The P&C Catering area will be up and running again this year with:- **Sausage Sizzle, sandwiches, cakes, muffins, fruit cups, tea ,coffee, cold drinks and lots of other goodies for sale.**



Help will be needed on sports carnival day Friday
between 7am - 2pm.
(Many hands make light work)

This year we are requesting the help of parents to assist
throughout the day. It would be great if you could
contribute ½ an hour of your time.

If you are available to help out on sports day
please add your name to the list in the
school office.

*Please note that there will be no Mell Billy's lunch
orders on Friday Sports Carnival Day.

'Good luck to all factions'

P&C Fundraising Committee



EASTER RAFFLE 2016 DONATIONS NEEDED



Thank you to everyone who has already
donated to our Easter raffle!

There's still time if you haven't had a chance
yet. We're looking for Easter themed
donations - baskets, eggs, plush toys etc.

Tickets have been sent home and need to be
returned by Tuesday 22nd March.

The raffle will be drawn at the Year 1 assembly
on Thursday 24th March. Good luck!

Thank you from the
P&C Fundraising Committee

Uniform Shop

Last Uniform Shop Open for Term 1 is on:-

Monday 4 April

OPENING TIMES

9am - 9:30am

School Uniform Order Forms are available at the front
office. Complete and place them in the uniform box
in the front office and they will be processed
as soon as possible.

Lauree Sims
Uniform Coordinator
Monday-Friday
During school hours
0400 239 144